

1018 MACLEOD TRAIL SE

# LOUISE *BLOCK*

HISTORIC SANDSTONE RETAIL OPPORTUNITY

RETAIL SPACE FOR LEASE



**Gordon Woodman**

President, Retail  
(403) 471-3832  
gordon.woodman@kpliglobal.com

**Andreana Sebu**

Senior Associate, Leasing & Sales  
(403) 608-7514  
andreana.sebu@kpliglobal.com

**Anthony Au**

Senior Associate, Leasing & Sales  
(403) 903-6123  
anthony.au@kpliglobal.com



# SUITE 110





# 4,956 SF

LOUISE BLOCK





1018 MACLEOD TRAIL SE

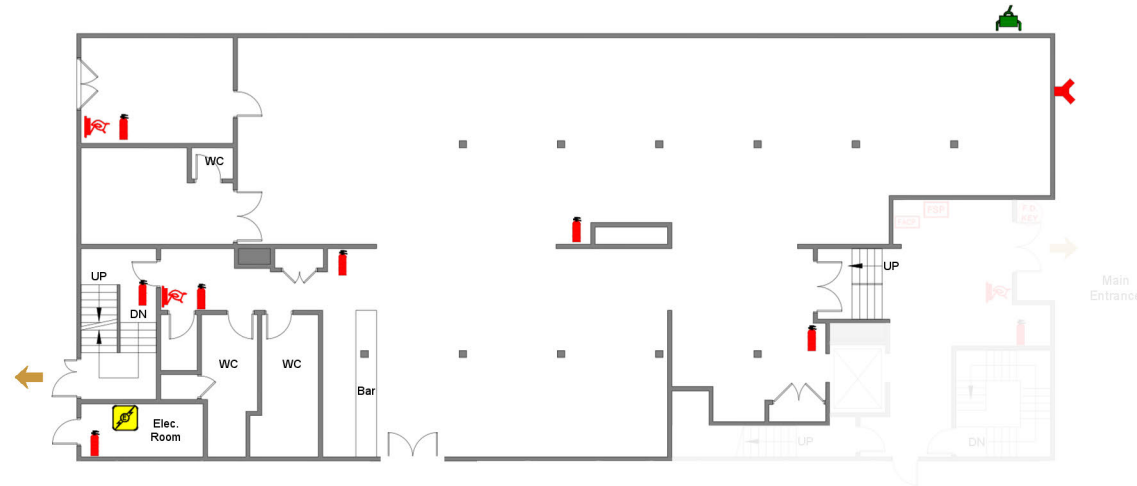
Availability	Suite 110: 4,956 sf
Operating Costs	\$13.95 (2026 est.)
Building Size	26,443 sf
Built/Renovated	1910 / 1974

## PROPERTY HIGHLIGHTS

-  Signage exposure to **±39,000 VPD** along Macleod Trail
-  **Prominent corner** suite with strong street visibility
-  **Flexible retail space** ideal for boutique retail, cafés, or wine / cocktail concepts
-  Walking distance to **downtown Calgary** amenities

## CHARACTER FEATURES

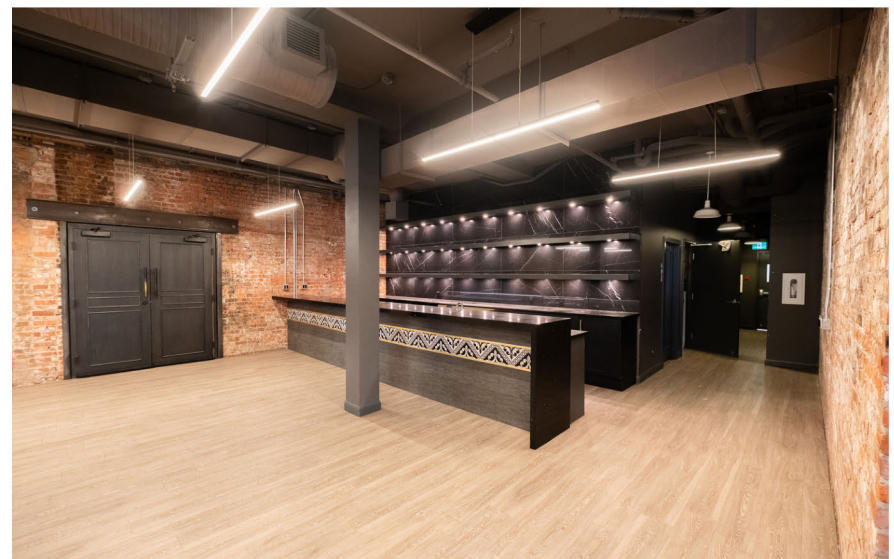
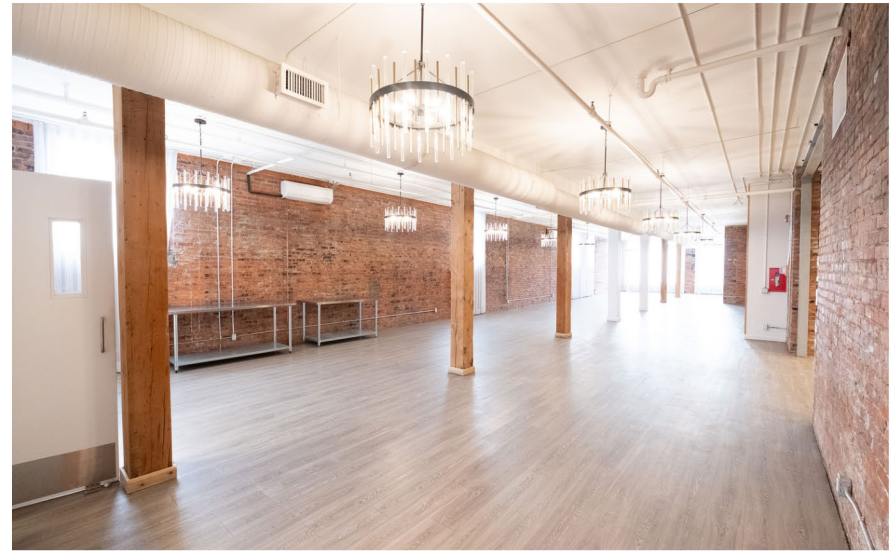
-  Historic sandstone building dating back to the 1880s
-  High ceilings and large windows providing abundant natural light
-  Distinct heritage architectural character throughout
-  Boutique street presence along Macleod Trail



# SUITE 110 4,956 SF

LOUISE BLOCK | 1018 MACLEOD TRAIL SE

---







# SUITE 100

# 2,643 SF





LOUISE BLOCK | 1018 MACLEOD TRAIL SE

Availability	Suite 100: 2,643 sf Suite 110: 4,956 sf
Zoning:	CC-X
Building Size	26,443 sf
Ceiling Height:	14' clear

## PROPERTY HIGHLIGHTS

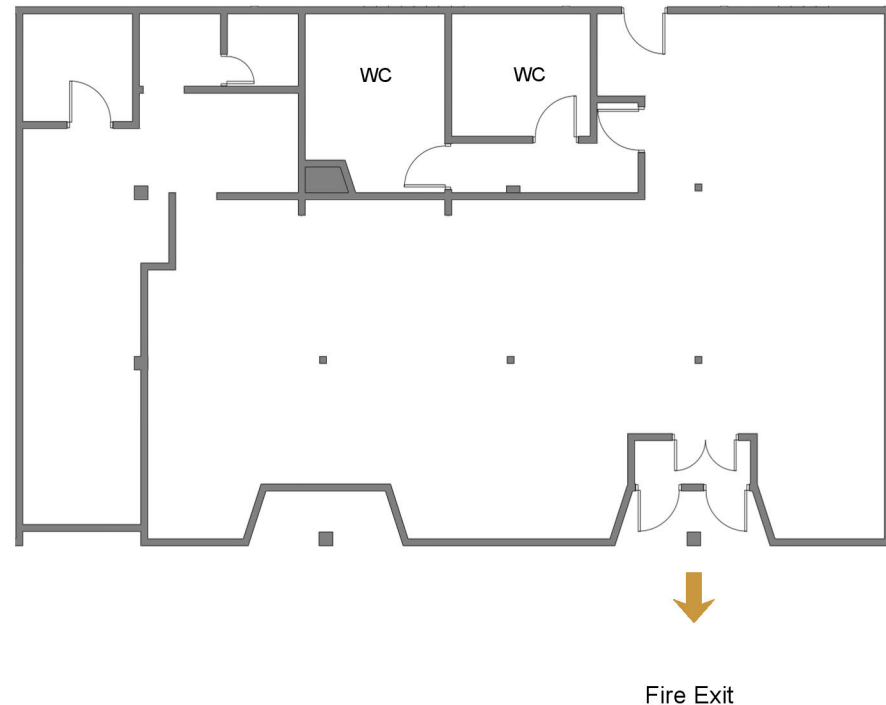
-  Signage exposure to **±39,000 VPD** along Macleod Trail
-  **Prominent corner** suite with strong street visibility
-  **Flexible retail space** ideal for boutique retail, cafés, or wine / cocktail concepts
-  Walking distance to **downtown Calgary** amenities

## CHARACTER FEATURES

-  Historic sandstone building dating back to the 1880s
-  High ceilings and large windows providing abundant natural light
-  Distinct heritage architectural character throughout
-  Boutique street presence along Macleod Trail



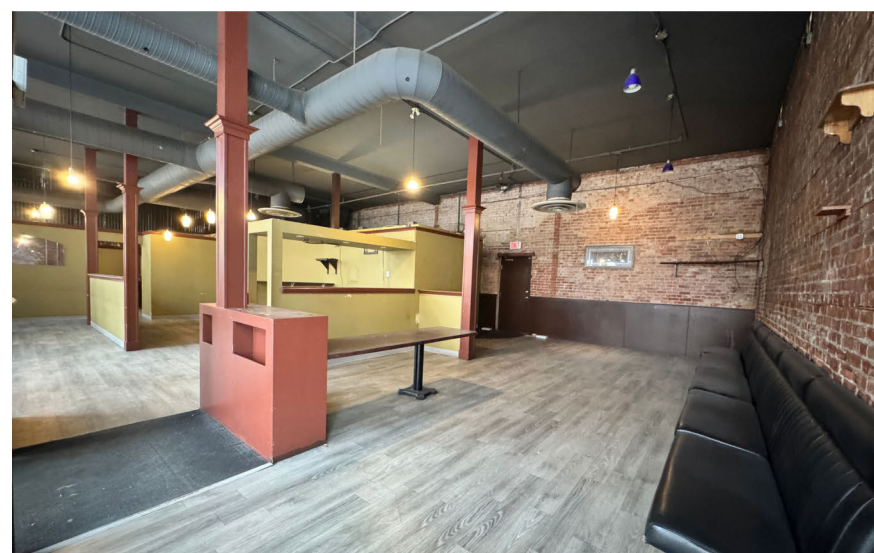
**±39,000 VPD**



# SUITE 100      2,643 SF

LOUISE BLOCK | 1018 MACLEOD TRAIL SE

---







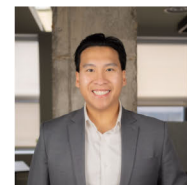
1018 MACLEOD TRAIL SE



**Gordon Woodman**  
President, Retail  
(403) 471-3832  
gordon.woodman@kpliglobal.com



**Andreana Sebuja**  
Senior Associate, Leasing & Sales  
(403) 608-7514  
andreana.sebuja@kpliglobal.com



**Anthony Au**  
Senior Associate, Leasing & Sales  
(403) 903-6123  
anthony.au@kpliglobal.com

KPLIGLOBAL.COM

© 2026 KPLI Real Estate Corp. All rights reserved.

