

LAST SUITE REMAINING!

FOR LEASE

Parke at Fish Creek

14505 BANNISTER ROAD SE,
CALGARY

Alexi Olcheski
President & CEO
403 971 5167
alex.olcheski@kpliglobal.com

Estelle Tran
Managing Director
403 993 2898
estelle.tran@kpliglobal.com

Anastasiya Gryshchenko
Vice President
825 994 2314
ana.gryshchenko@kpliglobal.com

KPLI
GLOBAL

Parke at Fish Creek

Availability

Suite 100B: 1,582 sf

Operating Costs

\$18.20

Parking

3 : 1,000 sf

21 surface visitor stalls

Building Details

Year Built: 2000

Building Class: A

Zoning

C-COR3

Signage

Pylon signage opportunity facing Macleod Trail

Highlights

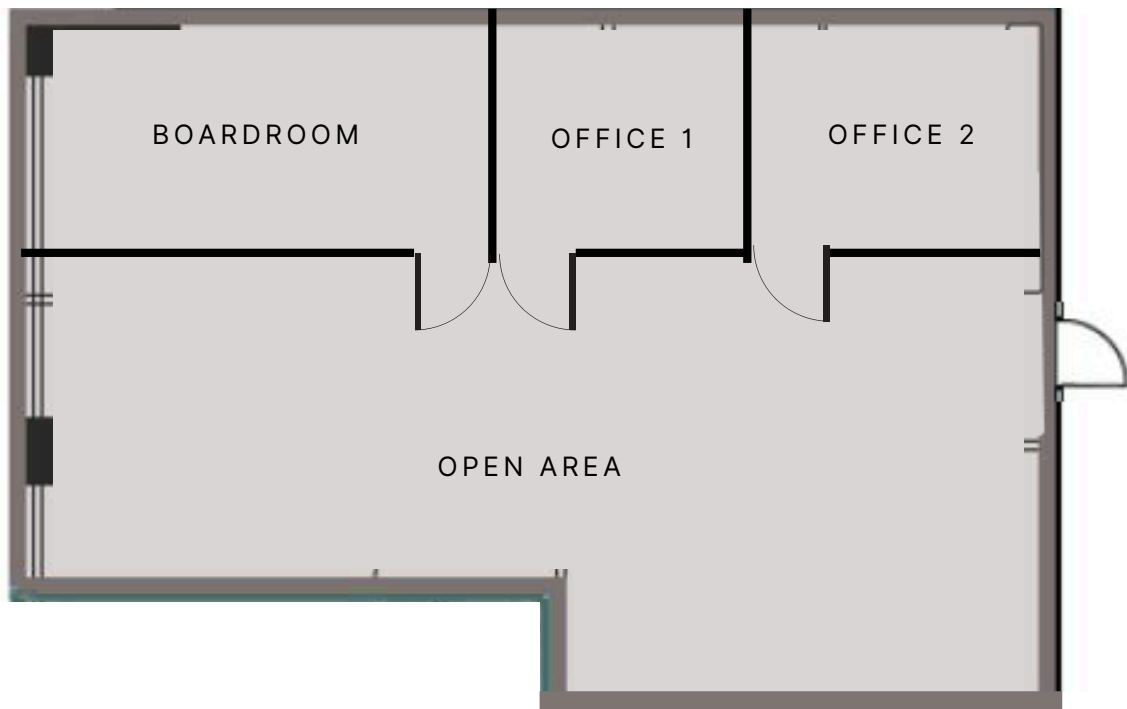
- Move-in ready show suites
- Direct access to Fish Creek LRT via pedestrian overpas
- EV Parking & Secured Bike Storage
- On-Site Property Management



Main Floor Suite

SUITE 100B - 1,582 SF

OPEN AREA | 2 OFFICES | BOARDROOM



Contact Us for More Information

14505 BANNISTER ROAD SE, CALGARY



Alexi Olcheski

President & CEO

403 971 5167 | alexi.olcheski@kpliglobal.com



Estelle Tran

Managing Director

403 993 2898 | estelle.tran@kpliglobal.com



Anastasiya Gryshchenko

Vice President

825 994 2314 | ana.gryshchenko@kpliglobal.com

