

FOR LEASE

CENTURY HEALTH & WELLNESS CENTRE

4620/4624 16 AVENUE NW, CALGARY



Alexi Olcheski

President & CEO

403 971 5167

alexi.olcheski@kpliglobal.com

Estelle Tran

Managing Director

403 993 2898

estelle.tran@kpliglobal.com

Anastasiya Gryshchenko

Vice President

825 994 2314

ana.gryshchenko@kpliglobal.com

KPLI
GLOBAL

Century Health & Wellness Centre

4620/4624 16 AVENUE NW

Availabilities

Space B - 450 sf
Space C - 1,491 sf
Leased Space A - 2,552 sf

Operating Costs

Contact Agent

Occupancy

Immediately

Parking

1:400 sf

Premium Renovations

Built in 2018, this two-storey building features modern, high-end finishes, creating a polished environment. It is highly marketable to tenants, owner-users, and investors, with strong sale-leaseback potential.

Prime Location

Located on Calgary's 16 Avenue NW in Montgomery, this property enjoys high visibility, steady traffic, and quick access to key destinations like downtown, Market Mall, and Foothills Medical Centre, attracting diverse tenants

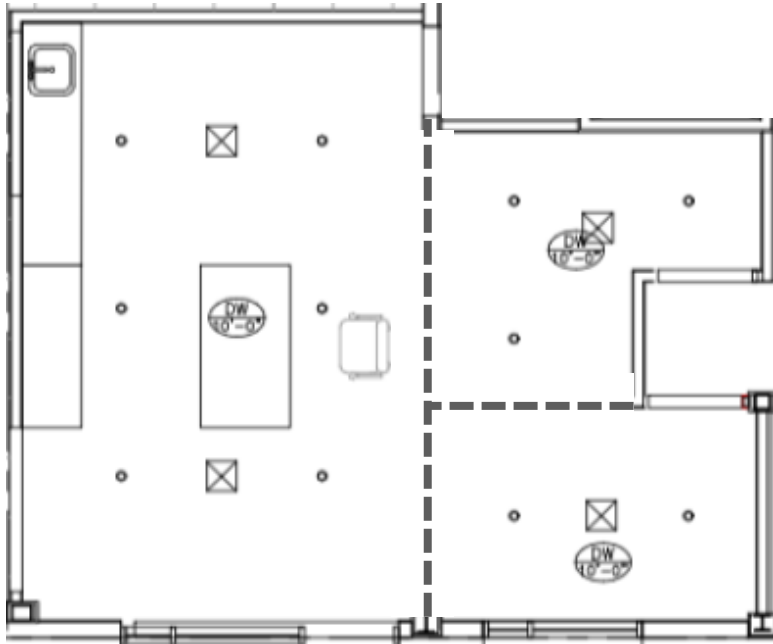


SECOND FLOOR

Space B

490SF

- Open space
- Kitchen
- Balcony

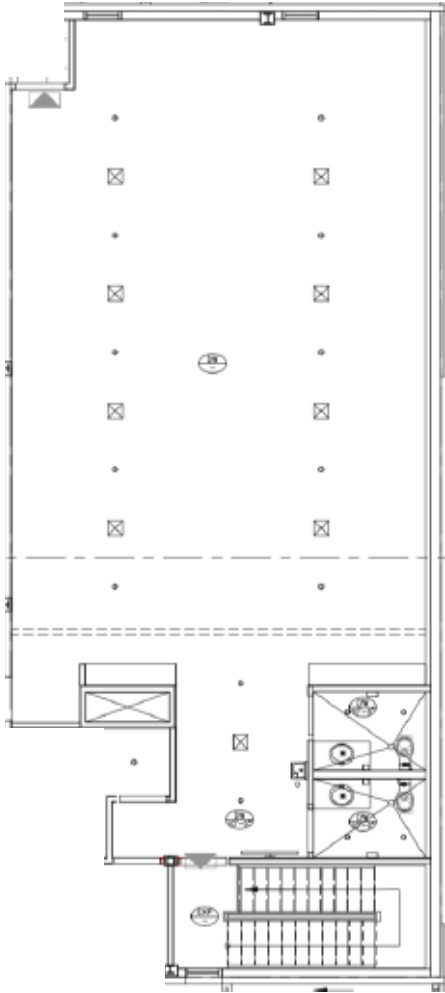


SECOND FLOOR

Space C

1,491 SF

- Open Space
- Washrooms
- Closet



SECOND FLOOR

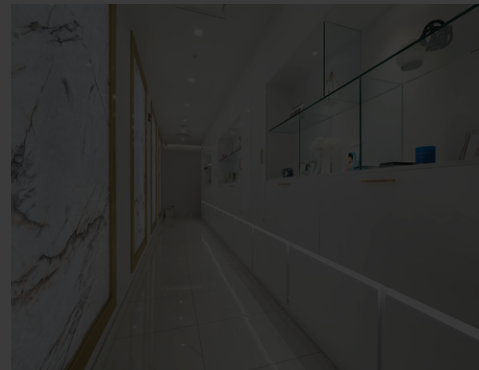
Space A

2,552 SF

- Welcoming Reception Area
- 6 Fully Equipped Patient Rooms
- Private Office Space
- 2 Kitchen Areas



LEASED



Century Health & Wellness Centre

4620/4624 - 16 AVENUE NW



Alexi Olcheski

President & CEO

403 971 5167

alexi.olcheski@kpliglobal.com



Estelle Tran

Managing Director

403 993 2898

stelle.tran@kpliglobal.com



Anastasiya Gryshchenko

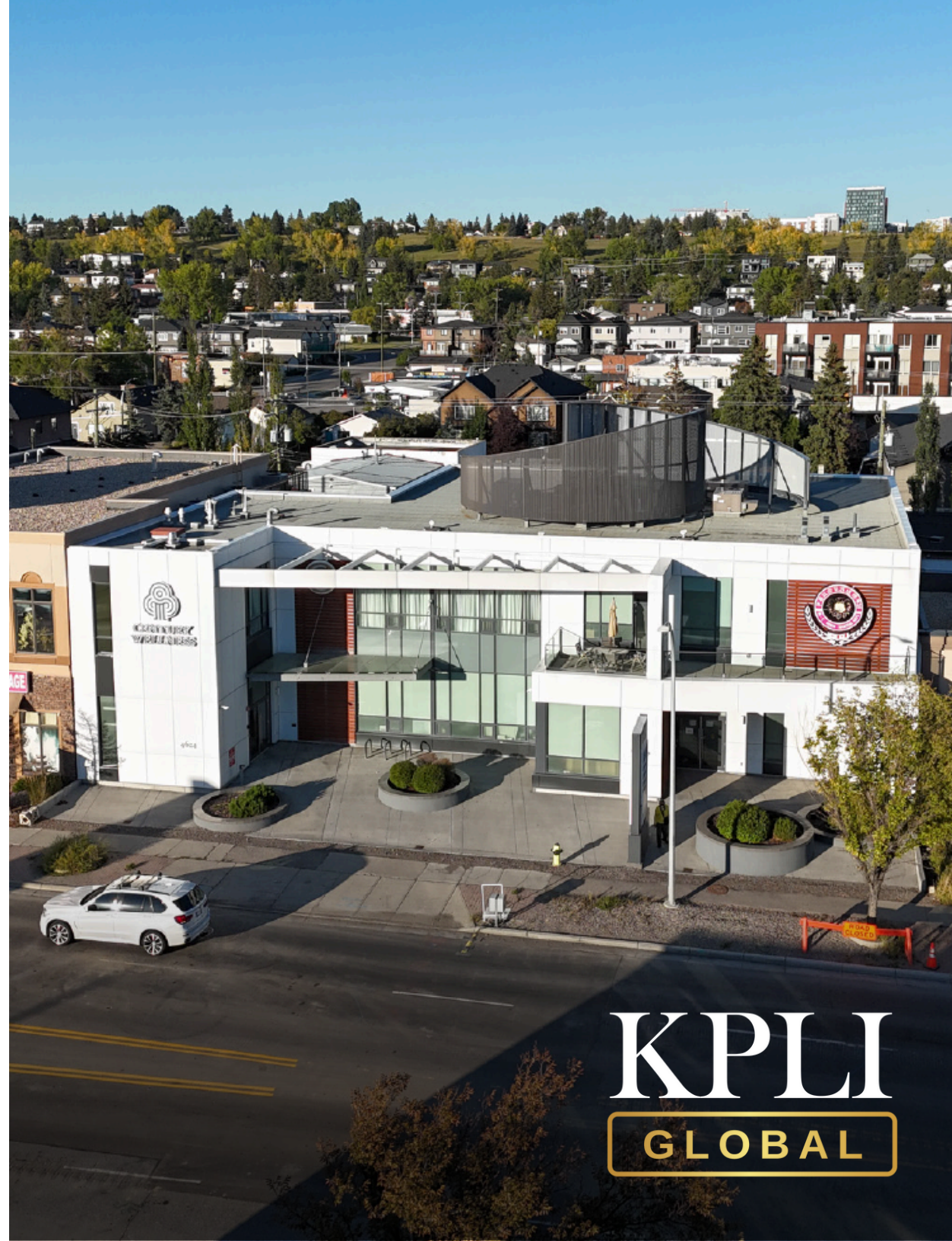
Vice President

825 994 2314

ana.gryshchenko@kpliglobal.com

KPLIGLOBAL.COM

© 2025 KPLI Global Corp. All rights reserved.



KPLI
GLOBAL