

FOR SUBLEASE

# CENTRE 15

1509 CENTRE STREET SW



**Alexi Olcheski**  
President & CEO  
403 971 5167  
alexi.olcheski@kpliglobal.com

**Estelle Tran**  
Managing Director  
403 993 2898  
estelle.tran@kpliglobal.com

**Anastasiya Gryshchenko**  
Vice President  
825 994 2314  
ana.gryshchenko@kpliglobal.com

**KPLI**  
**GLOBAL**

# Centre 15

1509 CENTRE STREET SW

Availability	Suite 600: 6,913 sf
Demising Options	Suite 600A: 3,379 sf Suite 600B: 3,091 sf
Expiry	Sep 2029
Operating Costs	\$15.38
Parking	5 allocated stalls
Parking Cost	\$375/stall a month

## Property Highlights



### Move-In Ready Show Suite

Fully built-out space with furniture available for added convenience.



### Underground Parking

Excellent parking ratio with secure underground stalls



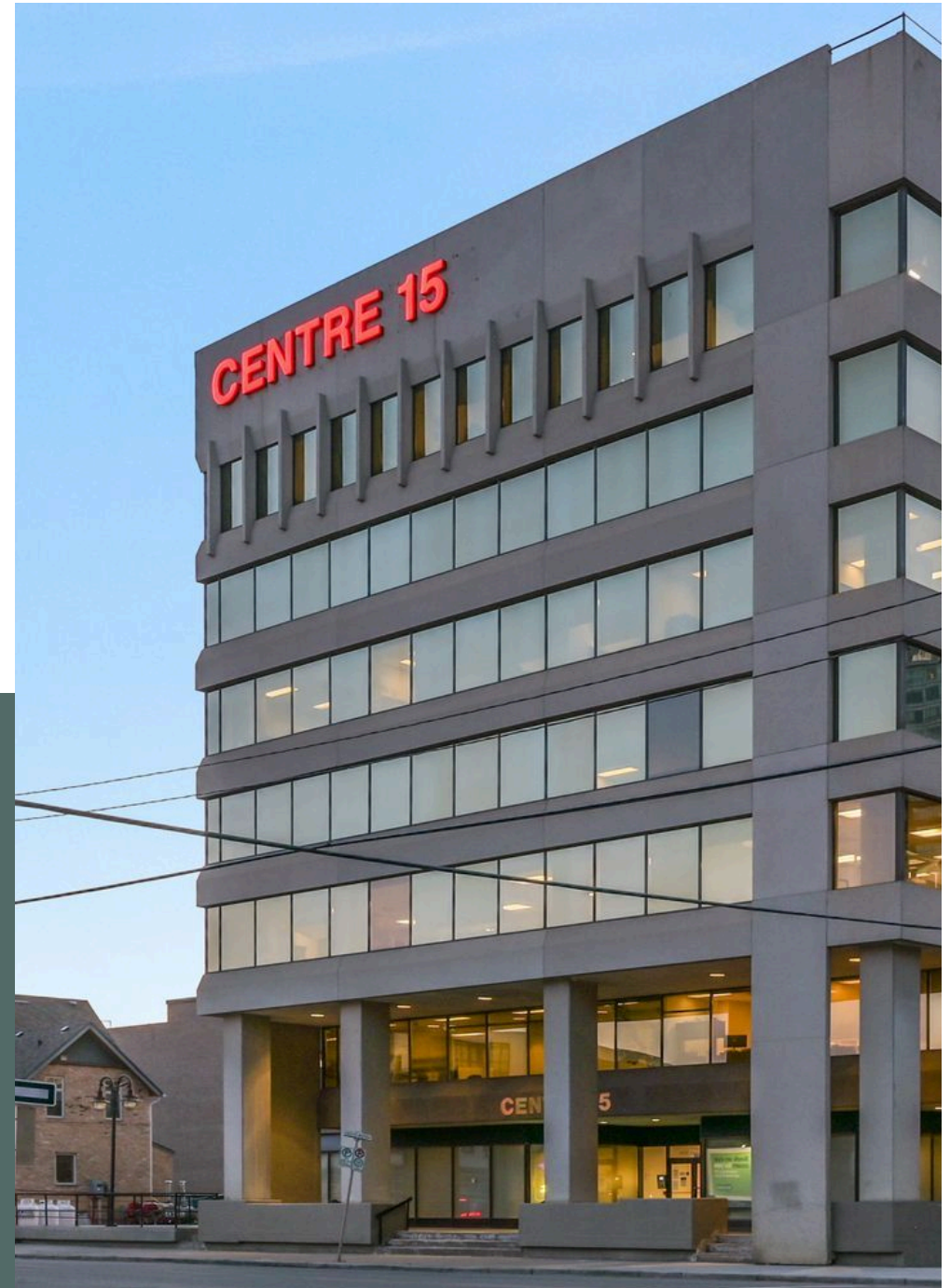
### Prime Location

Steps from 17th Ave, surrounded by top dining, retail, and services



### Convenient Access

Easily accessible via public transportation and major roadways.



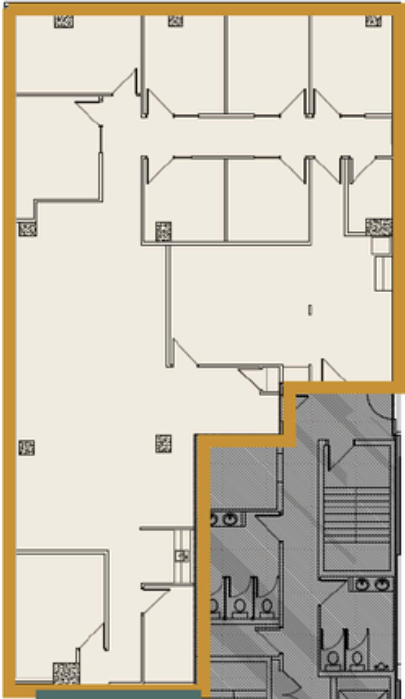
# Demising Options

**CONTIGUOUS TO 6,913 SF**

## Suite 600A

**3,379 SF**

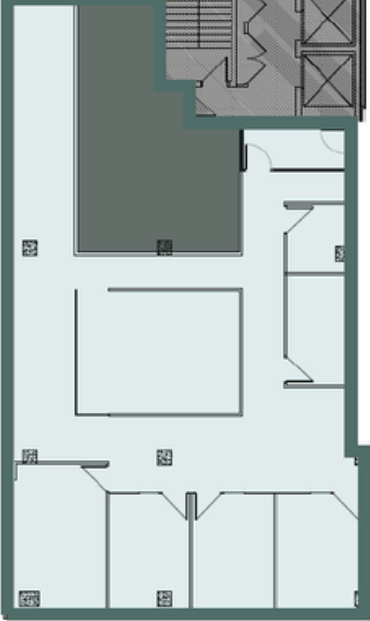
- Reception
- 8 Offices
- Boardroom
- Open area
- Kitchen



## Suite 600B

**3,091 SF**

- Reception
- 4 Offices
- File room
- Boardroom





# Centre 15

1509 CENTRE STREET SW

---



**Alexi Olcheski**

President & CEO

403 971 5167

[alexi.olcheski@kpliglobal.com](mailto:alexi.olcheski@kpliglobal.com)

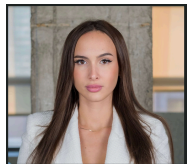


**Estelle Tran**

Managing Director

403 993 2898

[stelle.tran@kpliglobal.com](mailto:stelle.tran@kpliglobal.com)



**Anastasiya Gryshchenko**

Vice President

825 994 2314

[ana.gryshchenko@kpliglobal.com](mailto:ana.gryshchenko@kpliglobal.com)

[KPLIGLOBAL.COM](http://KPLIGLOBAL.COM)

© 2025 KPLI Global Corp. All rights reserved.



**KPLI**  
**GLOBAL**