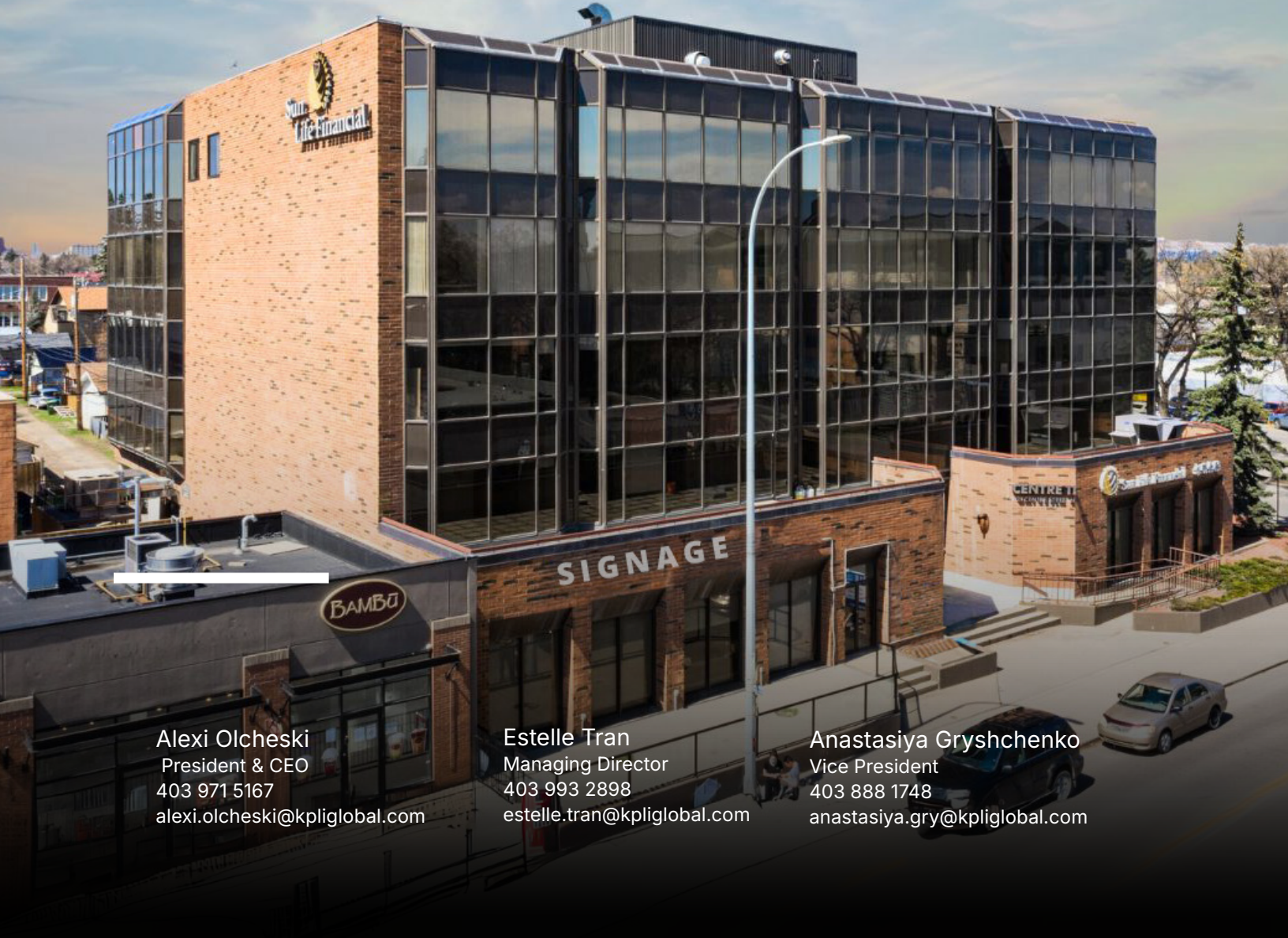




FOR LEASE

CENTRE 11

1121 CENTRE STREET NW



Alexi Olcheski
President & CEO
403 971 5167
alexi.olcheski@kpliglobal.com

Estelle Tran
Managing Director
403 993 2898
estelle.tran@kpliglobal.com

Anastasiya Gryshchenko
Vice President
403 888 1748
anastasiya.gryshchenko@kpliglobal.com

CENTRE 11

1121 Centre Street NW

Show Suite Availabilities

Suite 110	3,390 sf
Suite 200 C/L	2,500 sf
Suite 440	1,809 sf
Suite 440	1,382 sf

Full Floor Availabilities





Second floor	(2,500 sf C/L)	11,930 sf
Third floor		11,930 sf
Fifth floor		11,930 sf

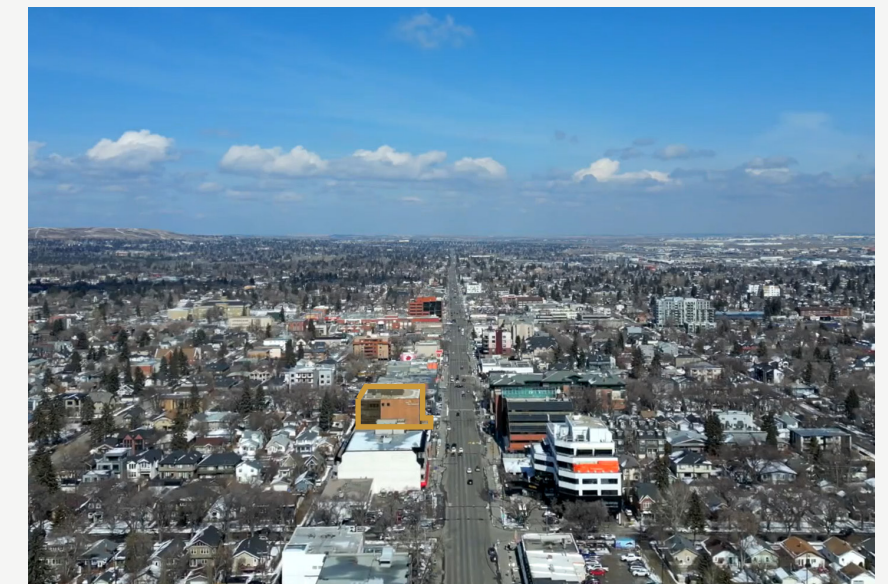
Property Details

Operating Costs	Op. Costs - \$13.73
	Taxes - \$2.42
	Total - \$16.15

Parking Ratio	1 : 649 sf
---------------	------------


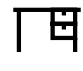
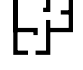

Property Highlights

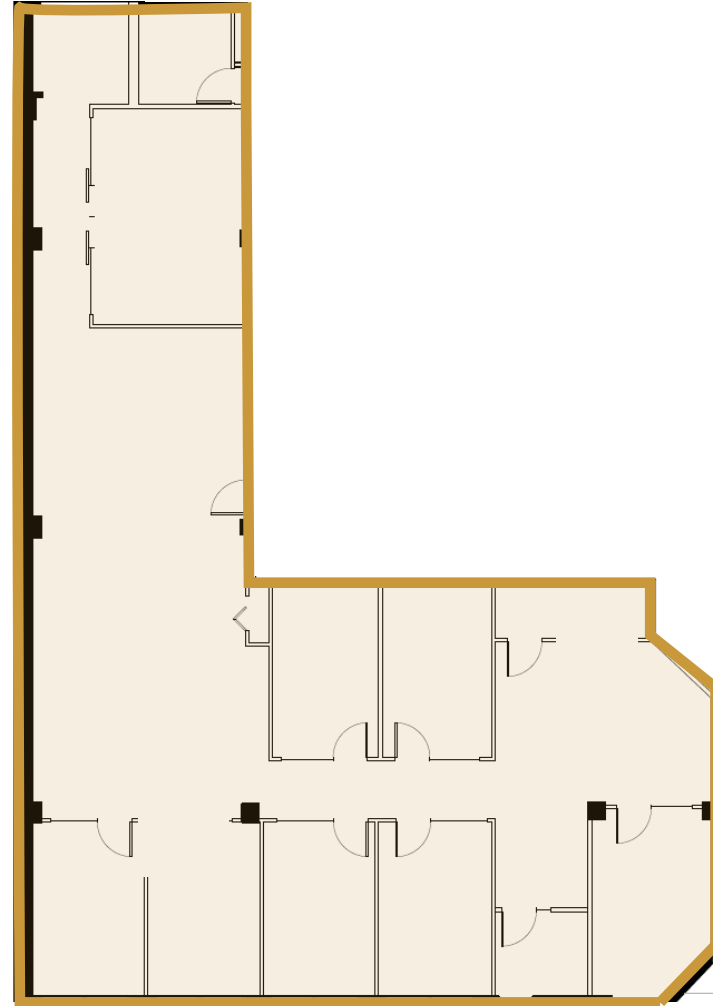
-  Located at the corner of 11 Avenue NW & Centre Street
-  Serviced by several bus routes
-  Ample amenities in the surrounding area
-  High-exposure signage opportunities



Main Floor

Suite 110 - 3,390 SF

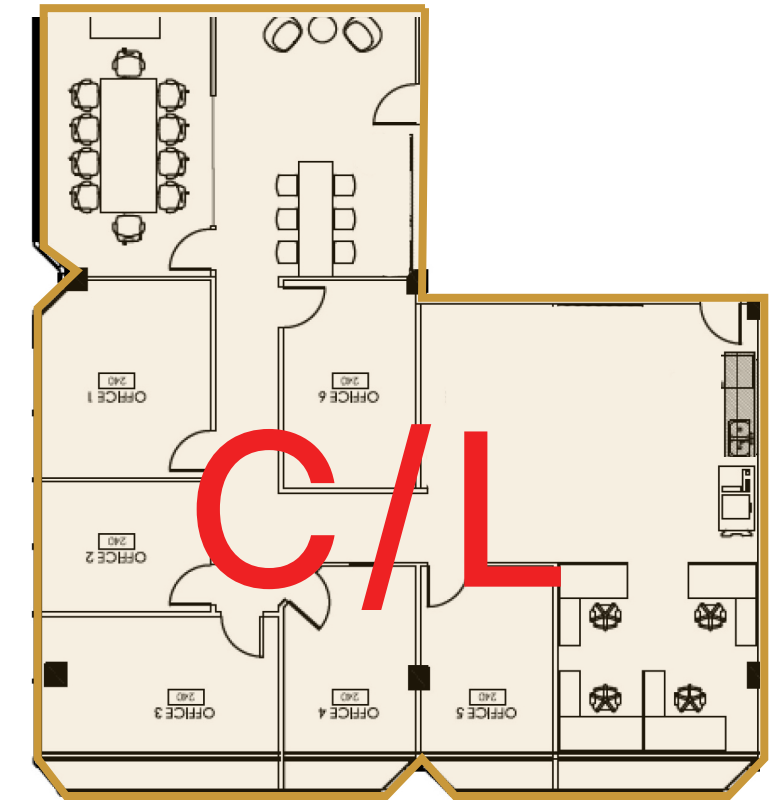
-  7 Offices
-  1 Boardroom room
-  Open Area
-  5 Underground parking stalls



Second Floor

Suite 200 - 2,500 SF

-  7 Offices
-  1 Boardroom room
-  Open Area
-  Kitchen/Lunch area
-  Copy room
-  3 Underground parking stalls





Fourth Floor

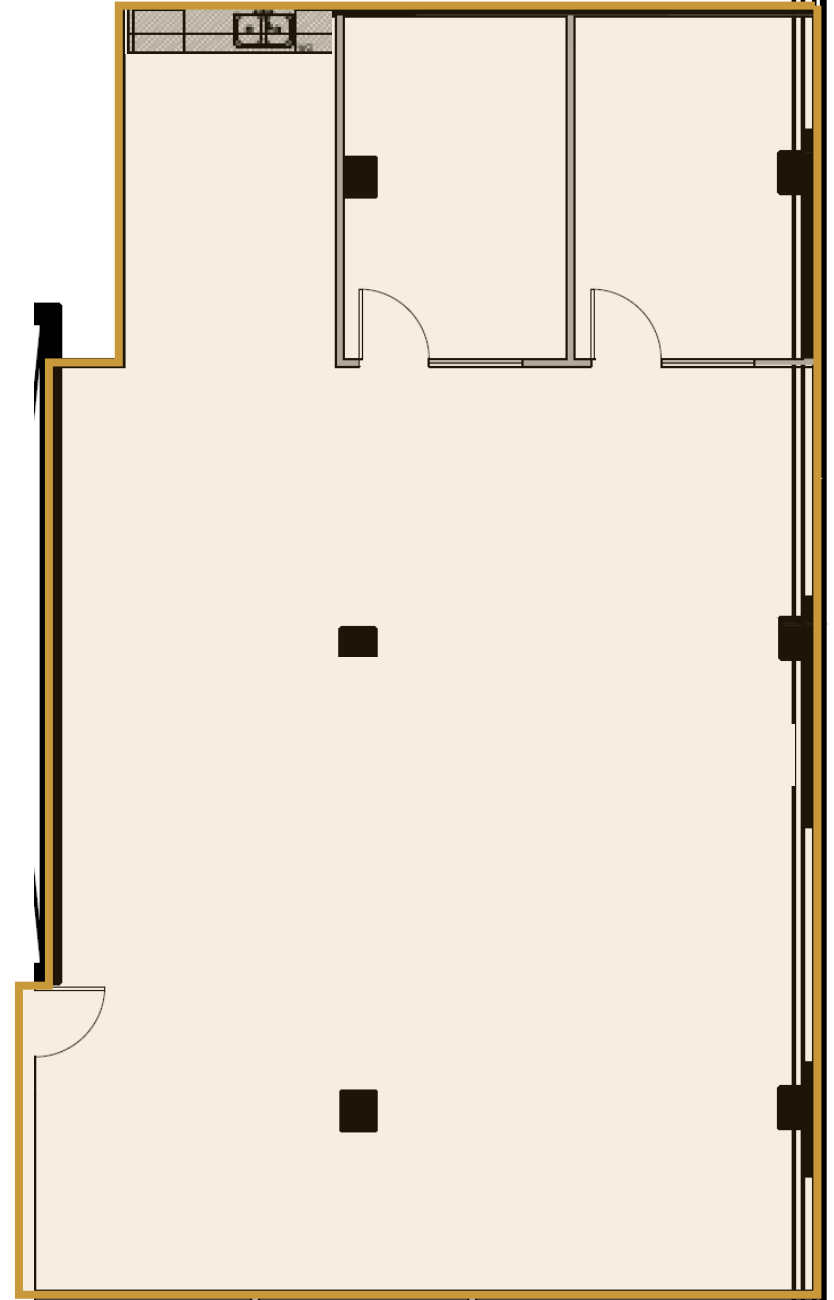
Suite 440 - 1,809 SF

 2 Offices

 Kitchen

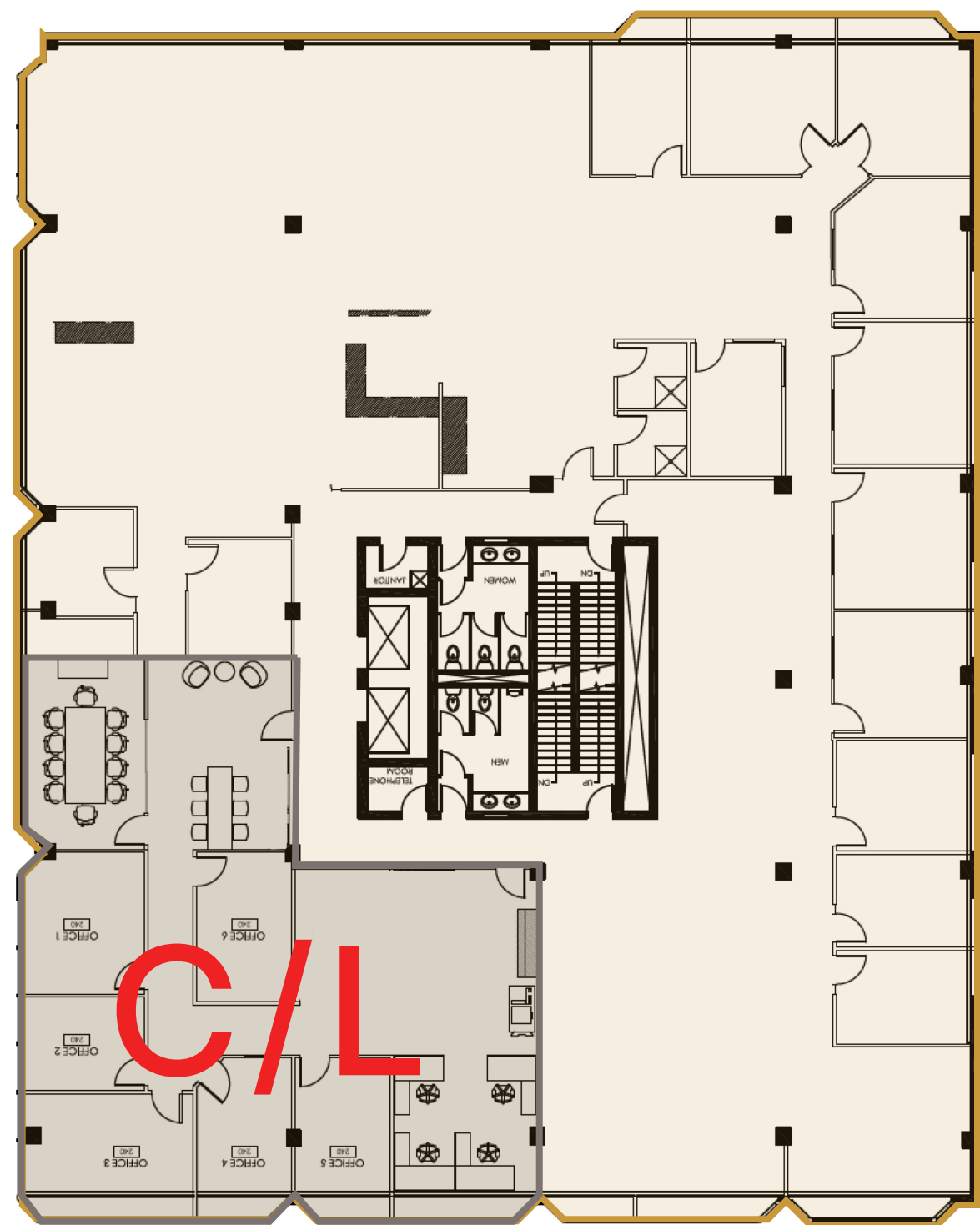
 Open Area

 2 Underground parking stalls



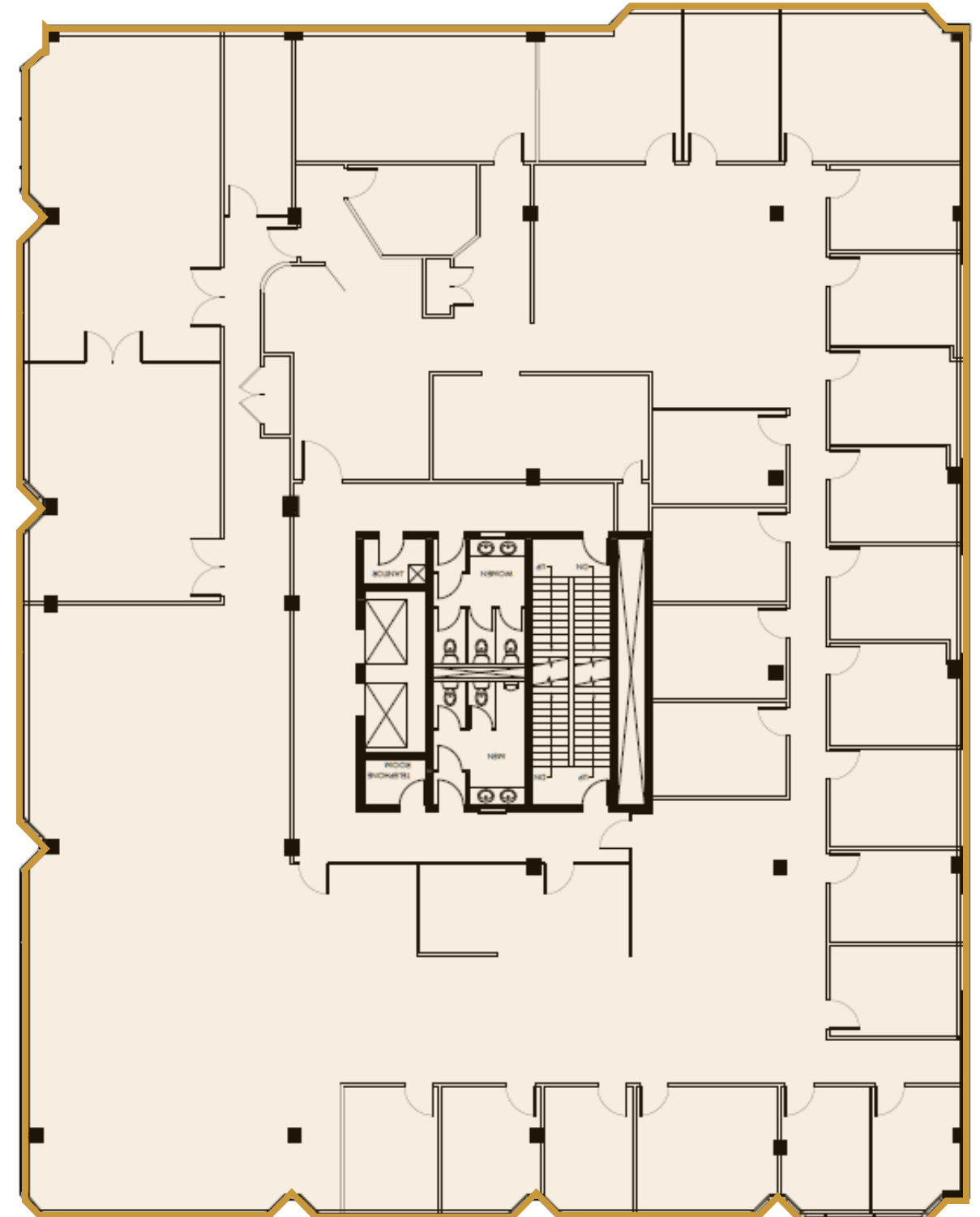
Second Floor

11,930 SF



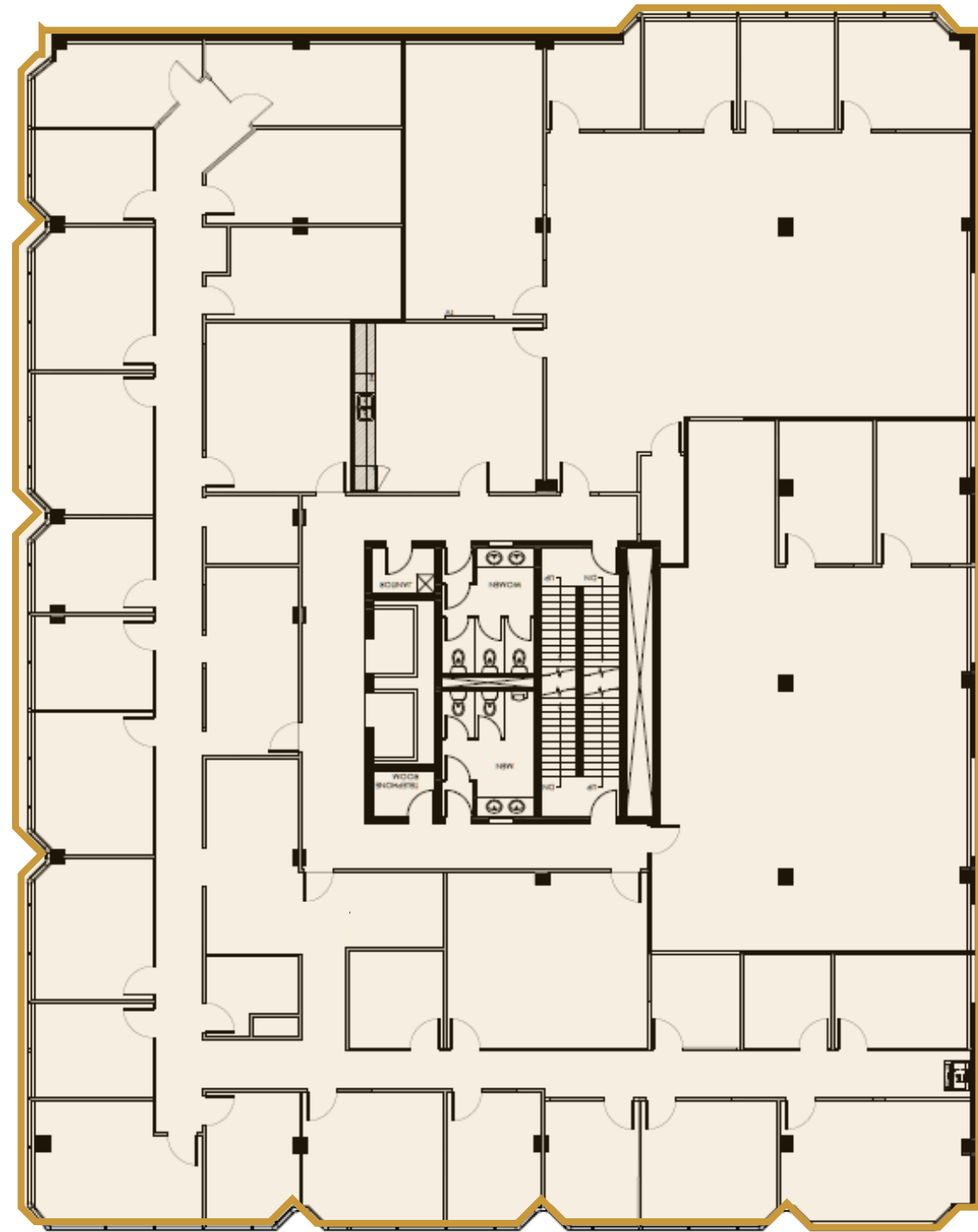
Third Floor

11,930 SF



Fouth Floor

11,930 SF



CENTRE 11

1121 CENTRE SREET NW

Alexi Olcheski

President & CEO

403 971 5167

alexi.olcheski@kpliglobal.com

Estelle Tran

Managing Director

403 993 2898

estelle.tran@kpliglobal.com

Anastasiya Gryshchenko

Vice President

403 888 1748

anastasiya.gry@kpliglobal.com

KPLI Global.



KPLI
GLOBAL