

KPLI

GLOBAL

FOR LEASE

Chartwell House

750 11 ST SW, CALGARY



Move-in ready suites and turnkey offices designed
for medical and professional users.

Alexi Olcheski, President & CEO
403 971 5167
alex.olcheski@kpliglobal.com

Estelle Tran, Managing Director
403 993 2898
estelle.tran@kpliglobal.com

Anastasiya Gryshchenko, Vice President
825 994 2314
ana.gryshchenko@kpliglobal.com

Chartwell House

750 11TH ST SW

Building Features

BUILDING SIZE 23,000 sf

OPERATING COST \$14.00 psf

PARKING 13 reserved underground stalls
\$225 per stall / month
Ample parking in surrounding area

Availabilities

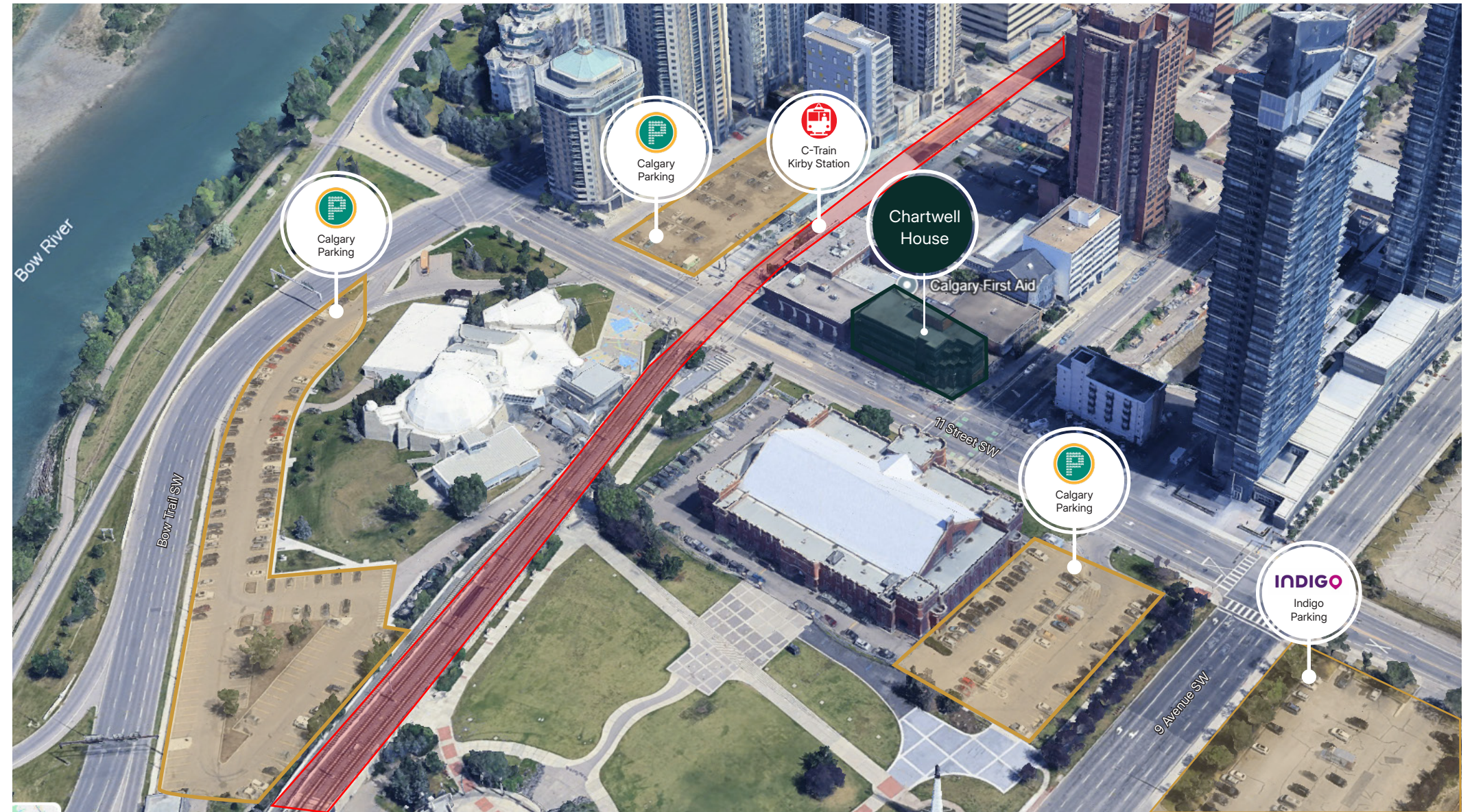
SECOND FLOOR

Suite 210 Leased 2,228-sf
[Show Suite](#)

THIRD FLOOR

Suite 310 3,184 sf
[Show Suite](#)

Suite 305 Leased 927-sf
[Show Suite](#)



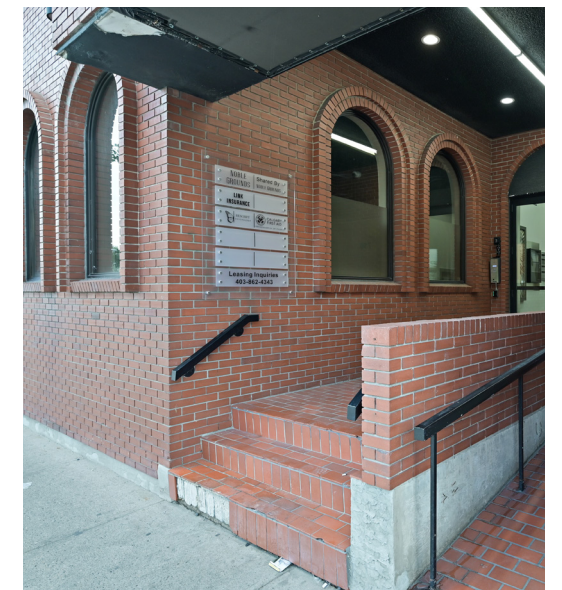
Highlights

Newly Renovated Show Suites
Featuring modern finishes and thoughtfully designed layouts, these spaces provide a welcoming and professional environment.

C-Train Access (Kerby Station)
Convenient public transit connection for easy commuting.

Surface Paid Parking
Multiple nearby lots offer hourly or monthly parking options.

Wheelchair Accessible
Fully equipped for accessibility, ensuring comfort and ease of access for all staff and visitors.



SHOW SUITE

THIRD FLOOR

SUITE 310

3,184 SF



Newly renovated



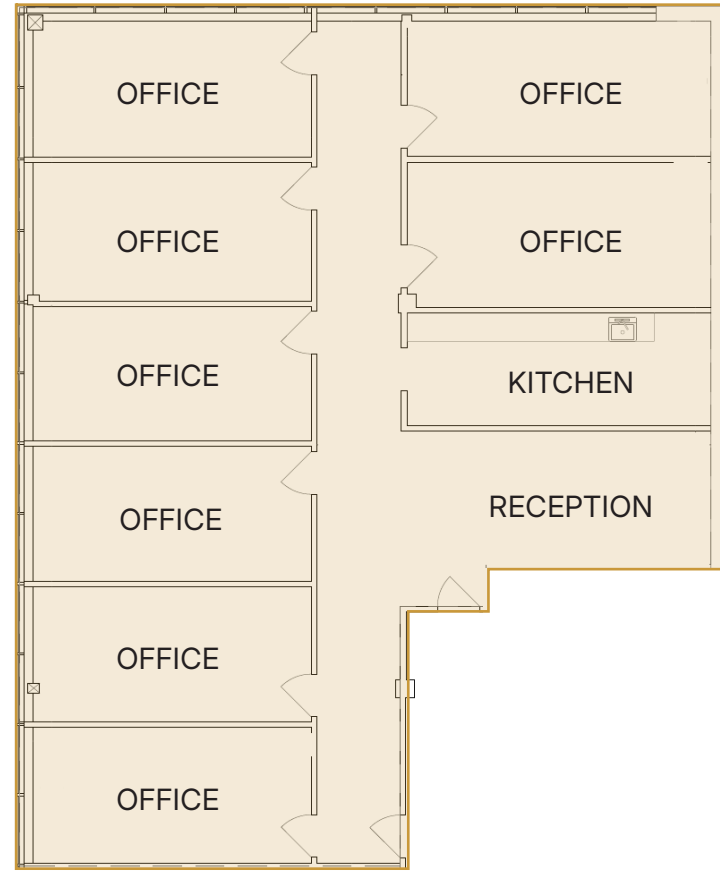
8 Offices



Waiting area



Kitchen



SHOW SUITE

THIRD FLOOR

SUITE 305

927 SF



Newly renovated



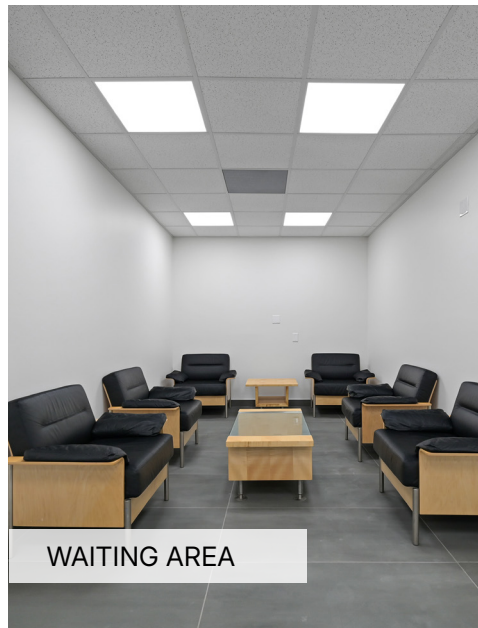
3 Offices



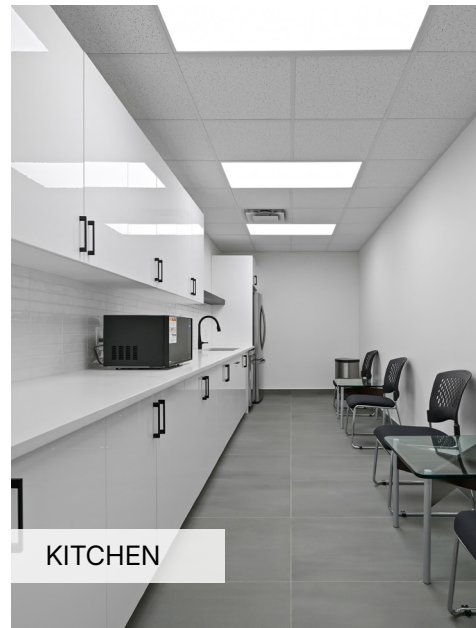
Waiting area



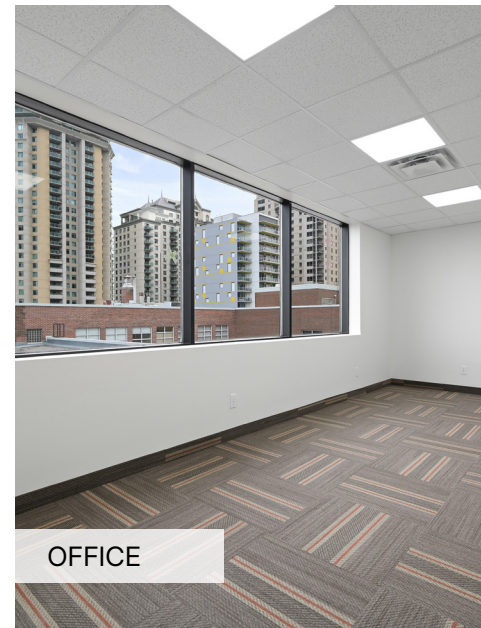
Kitchen



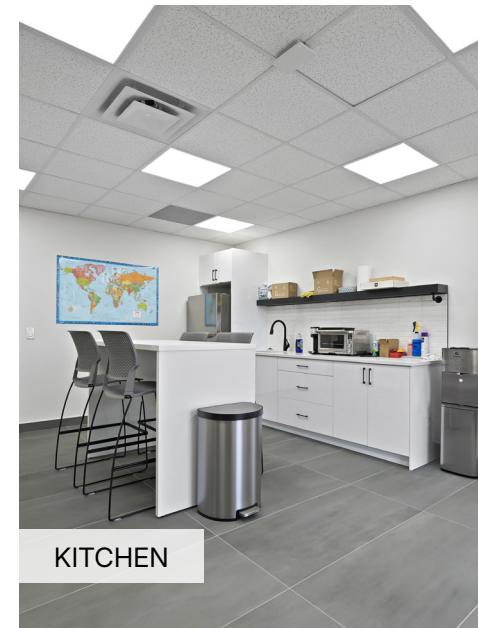
WAITING AREA



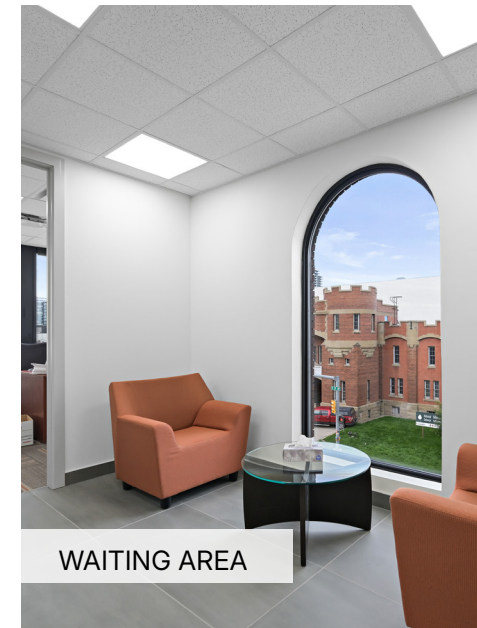
KITCHEN



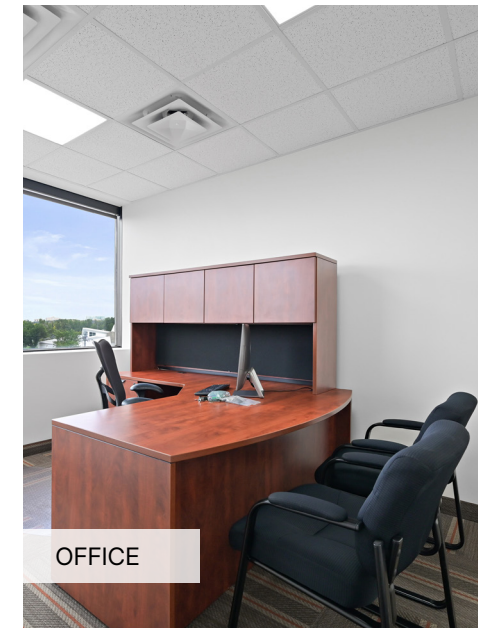
OFFICE



KITCHEN



WAITING AREA



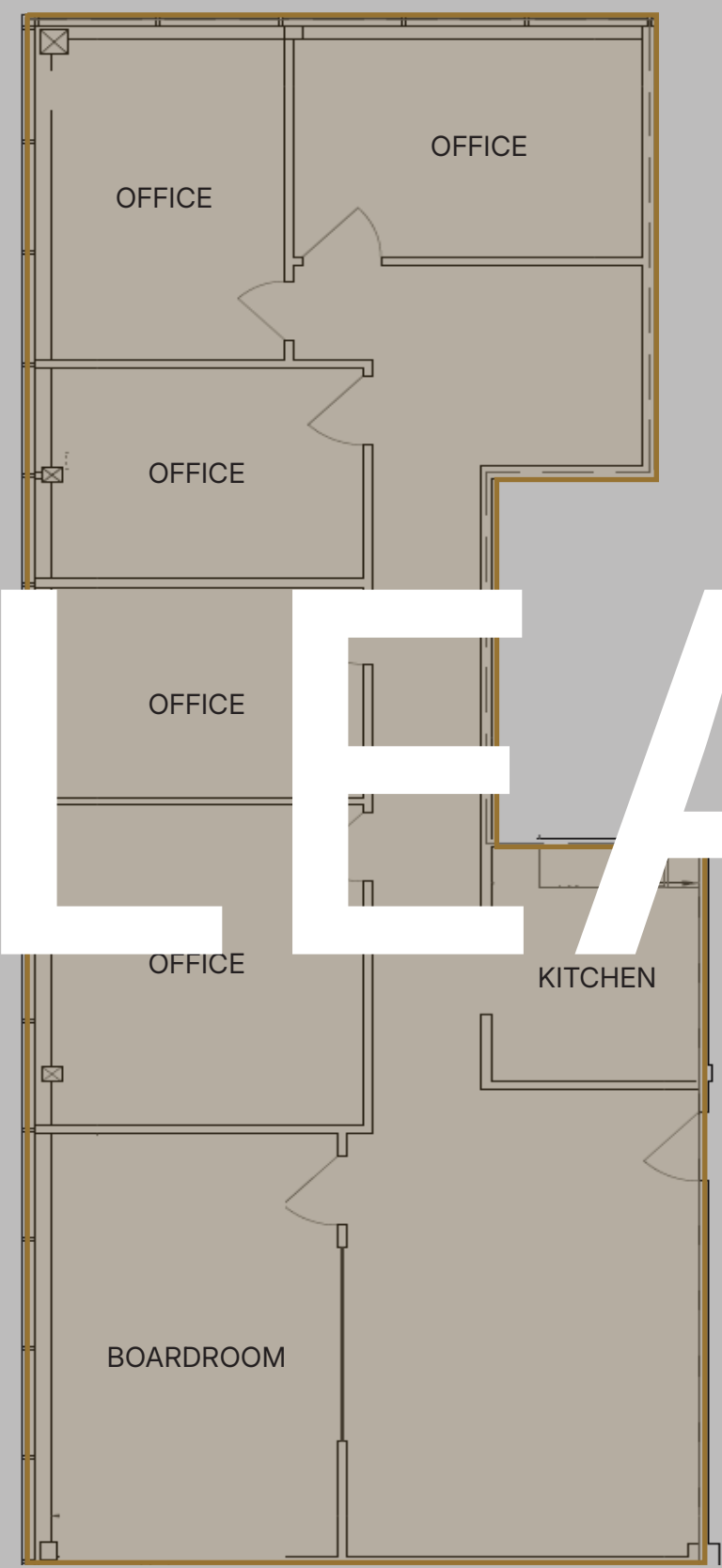
OFFICE

SECOND FLOOR

SUITE 210

2,228 SF

-  Newly renovated
-  5 Offices
-  1 Boardroom
-  Kitchen facility



LEASED



Chartwell House

750 11 St SW



Alexi Olcheski
President & CEO
403 232 4332
alex.olcheski@kpliglobal.com



Estelle Tran
Managing Director
403 993 2898
estelle.tran@kpliglobal.com



Anastasiya Gryshchenko
Vice President
403 888 1748
anastasiya.gry@kpliglobal.com

